



International  
Labour  
Organization



# SOCIAL PROTECTION

## BUILDING A GREENER FUTURE FOR ALL

Climate change is impacting the lives of millions of people around the planet, affecting incomes, jobs and the health of workers and their communities.



more than

**1.2 billion jobs**

rely on a stable environment

**Social protection can facilitate climate change adaptation efforts**, as it provides options to protect populations vulnerable to climate-related shocks and disasters. These include access to affordable health care, unemployment protection, employment guarantee schemes and cash or in-kind transfers.

**Social protection can also support climate change mitigation measures.** Combined with active labour market policies and skills development, it helps tackling the side effects that green policies may have on jobs in carbon-intensive sectors. Such measures include unemployment protection and cash or in-kind transfer programs for workers and households at risk of losing their jobs or livelihoods due to green phase-outs or environmental conservation measures.

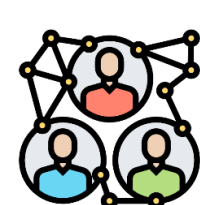
To help raise ambition in climate action and ensure a **just and equitable transition towards environmentally sustainable economies and societies for all**, the ILO has been providing support to its constituents in the following areas:



**KNOWLEDGE PRODUCTION AND SHARING**



**TECHNICAL ADVISORY SERVICES AND PARTNERSHIPS**



**ADVOCACY AND AWARENESS-RAISING**



**Together, let's build an environmentally sustainable future for all!**

Learn more at:

[climate.social-protection.org](https://climate.social-protection.org)

With the generous support of:

