



International
Labour
Organization

100
1919-2019

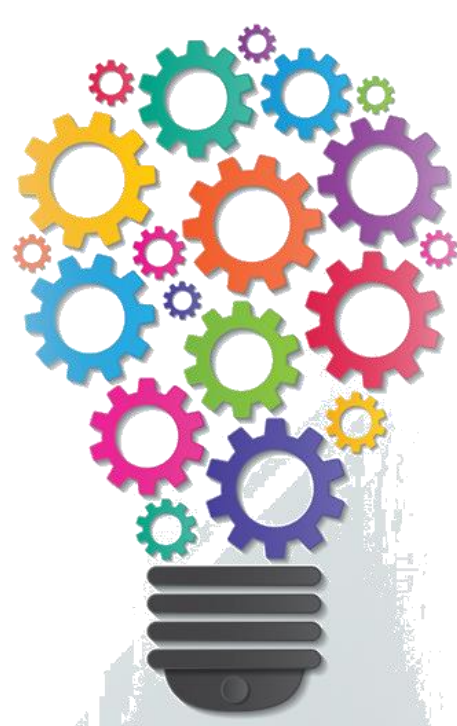
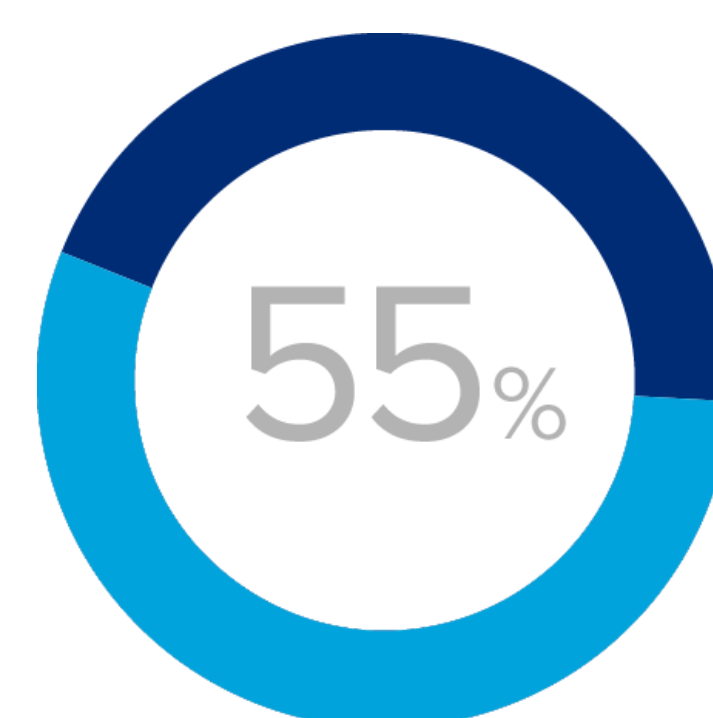
INNOVATIVE SOLUTIONS TO EXTEND COVERAGE TO RURAL POPULATIONS

Nearly half of the world's population, more than **three billion people**, live in rural areas where poverty and vulnerability are pervasive.



Many depend on agriculture and natural resources for their livelihoods.

Despite considerable progress, many of these rural households are among the **55 per cent** of the global population with no or reduced access to social protection.



International experience shows that **innovative solutions exist** to successfully adapt and extend social protection to rural populations based on internationally agreed principles and standards for the promotion of decent work in the rural economy.

With the technical collaboration of



Food and Agriculture Organization
of the United Nations

Learn more:



#USP2030



100
1919-2019
SOCIAL JUSTICE
DECENT WORK